

# GODREJ ARIA

SECTOR 79, GURGAON



## A PERFECT VIEW TO A PERFECT LIFE

Enjoy every day with uninterrupted views of the beautiful Aravallis.  
Godrej Aria, your opportunity to create a perfect life.







# GODREJ ARIA

SECTOR 79, GURGAON



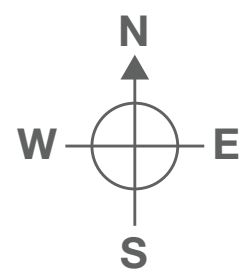




## PERFECT WAY OF LIFE

Begin every day with the perfect morning. Wake up to spectacular views of the resplendent Aravallis or lose yourself in acres of open and green spaces that cover 80% of the development, as you take your morning stroll. Spread over 7 acres, Godrej Aria has 6 magnificent towers, standing tall amidst 2.5 acres of lush landscaped courtyards. The amenities at the 15,000 sq. ft. Club O<sub>2</sub> will keep you busy with activities that complement your perfect lifestyle.





MASTER LAYOUT



- EN Entrance Plaza
- Drop-Off Points
- Cricket Pitch
- Yoga Court
- Tennis Court
- Elders' Seating Area
- Landscaped Courtyard
- Swimming Pool
- Multi-purpose Court
- Cycling and Jogging Track
- Amphitheatre
- Landscaped Terrace
- Children's Play Area
- Dogs' Corner
- School
- Club O<sub>2</sub>

## PERFECT CONNECTIVITY

Life at Godrej Aria is perfectly complemented by seamless connectivity to all the addresses important to you. Located very close to NH8 on New Golf Course Road, Godrej Aria offers a host of advantages that makes both leisure and travel simpler, with proximity to golf courses, restaurants and hotels like Hyatt Regency. The airport as well as IFFCO Chowk, the commercial hub of Gurgaon, are located close by.







Metro Station



Proposed Metro Route



NH8



Dwarka Expressway



Pataudi Road



Commercial Complex



Medical Centre



Restaurant



Hotel



School



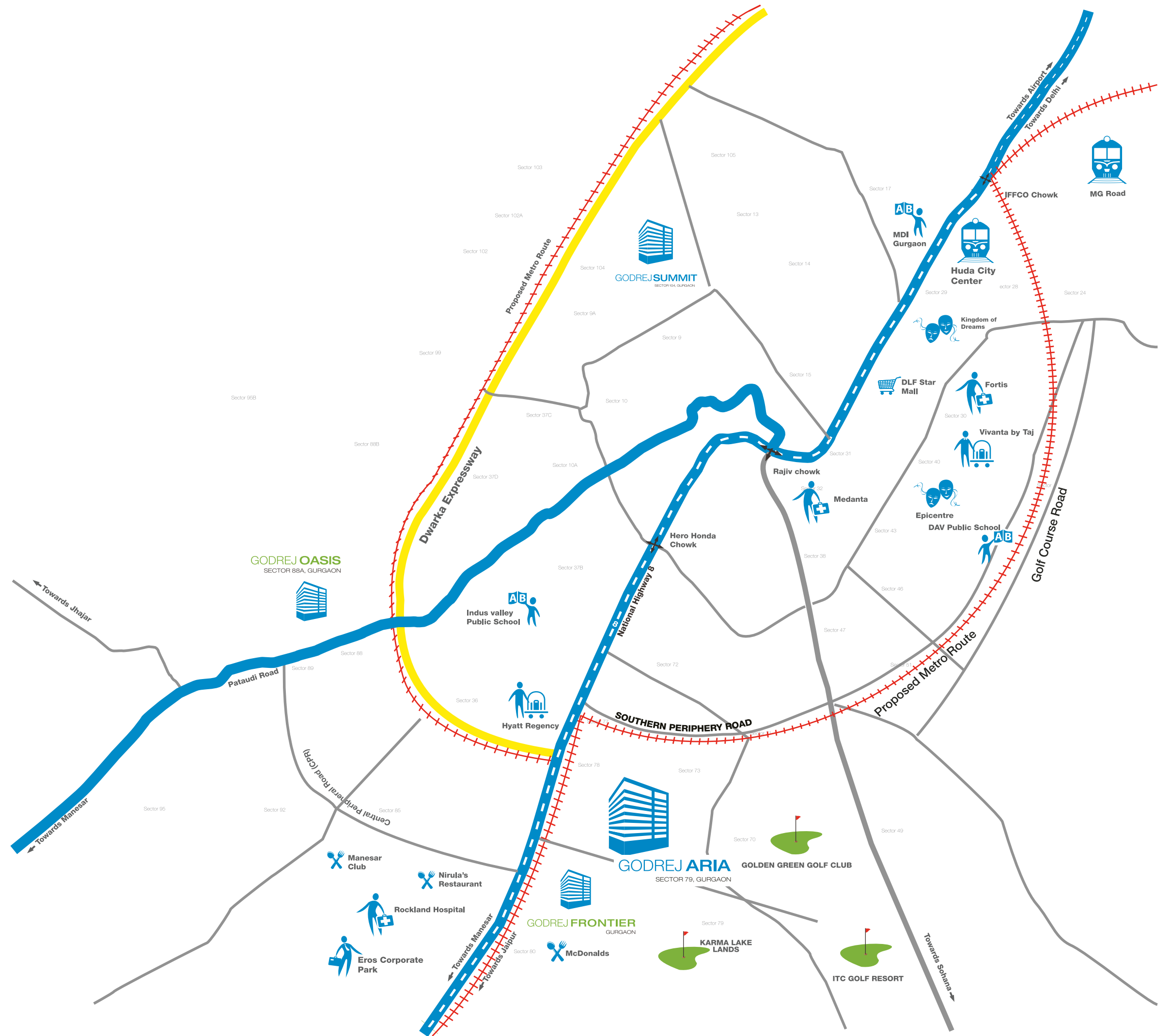
Entertainment



Mall / Market



Golf Course



## PERFECT JOYS OF LIFE

The breathtaking views of the Aravallis, well-designed interiors and landscaped courtyards bring together all the aspects of perfect living at Godrej Aria.







## PERFECT VIEWS

At Godrej Aria, the majestic Aravalli range makes for picturesque views from the comfort of your home. Vast acres of open and green spaces that cover 80% of the property ensure that you experience moments filled with perfection every day.



## PERFECT INTERIORS

Homes open from three sides provide well-ventilated and naturally lit spaces for everyday living. Double height entrance lobbies add grandeur to your lifestyle.





## PERFECT RELAXATION

Enjoy a light conversation with your loved ones while you walk around 2.5 acres of sprawling landscaped courtyards. The clubhouse is located adjacent to the courtyards offering a host of activities and amenities for you to spend quality time with family and friends.



## PERFECT REJUVENATION

Be it indoors or out, we've ensured that your life is packed with activities wherever you go.  
At Godrej Aria, you will have every amenity and activity to make the most of each day.  
The 15,000 sq. ft. Club O<sub>2</sub> provides you with both entertainment and leisure facilities.





「CLUB O<sub>2</sub>





**Children's Play Area** – For kids to create their childhood memories.



**Dogs' Corner** – When it's play time for your pets, you will find the perfect place to keep them happy.



**Indoor Games** – Enjoy a game of squash or table tennis. Family time will be fun with games like cards, carrom, board games and many more.



**Amphitheatre** – An ideal entertainment centre for social events and get-togethers.





**Swimming Pool** – Take a dip or swim a few laps and feel refreshed. You can also relax at the pool side cafe.



**Tennis Court** – Step out for a game of tennis with the scenic Aravallis in the background.



**Meditation and Yoga Centre** – A place with the perfect ambience to spend some peaceful time with yourself.



**Cricket Practice Pitch** – A ground to polish your cricketing skills or to coach your little one.



**Basketball Court** – Enjoy an action-packed game of basketball with your friends.



**Cycling and Jogging Track** – Feel the breeze while you enjoy a ride on your bicycle or a jog at the well-designed cycling and jogging track.



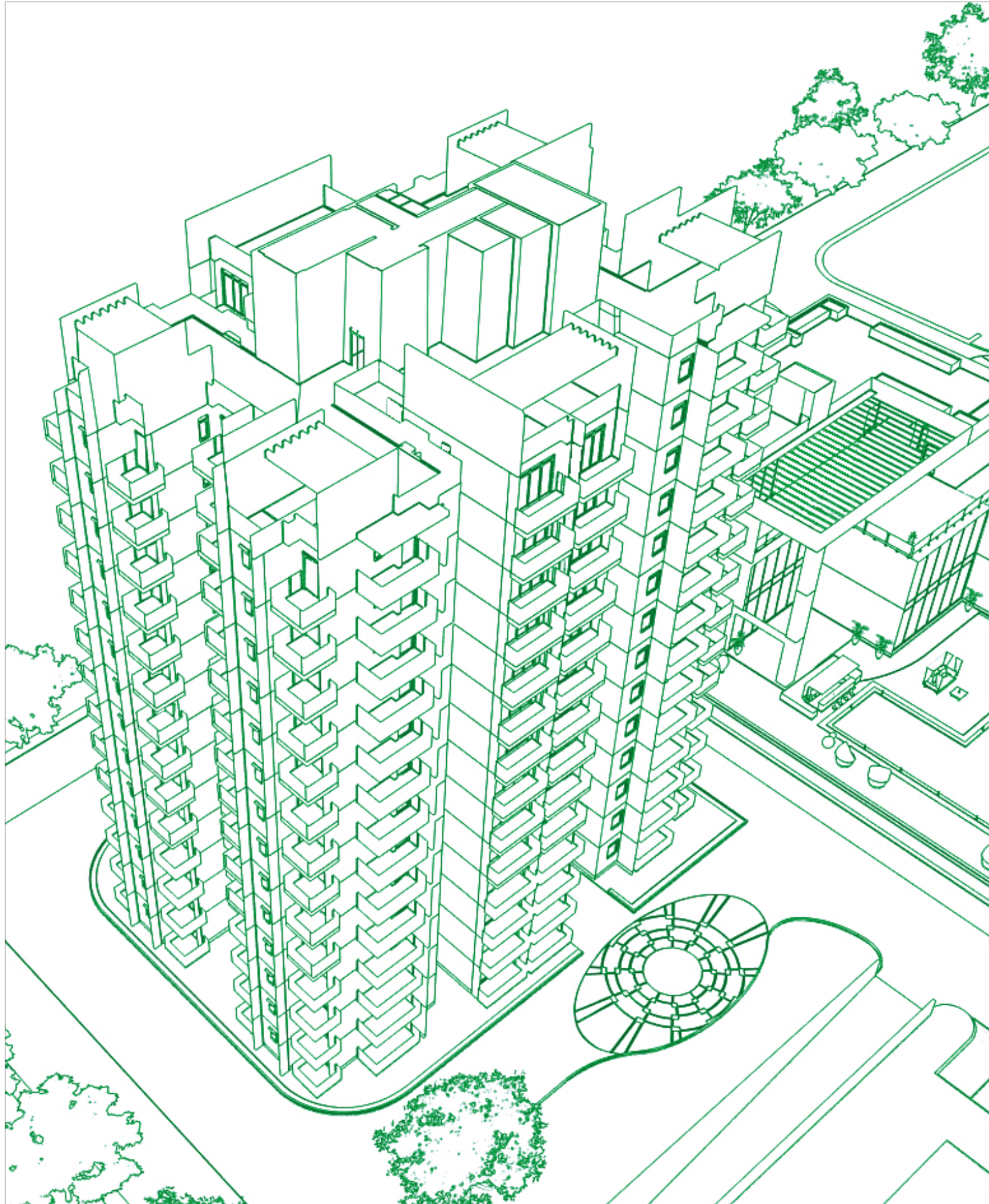
**Elders' Seating Area** – A perfect place for elders to sit back and enjoy a conversation along with great company.



**Gymnasium and Spa** – Stay fit with your daily work-out at the fully equipped gymnasium. You can also relax at the spa.







## PERFECT BALANCE

Sustainability is of prime importance at Godrej Aria. Our endeavour to be environmentally responsible includes:



### RAINWATER HARVESTING SYSTEM

Saves more natural water for future use and vastly improves water sustainability.



### SOLAR PHOTOVOLTAIC SYSTEM

Making use of solar energy, thereby reducing electricity bills.



### GREY WATER TREATMENT

Used water is treated and safely reused, thus reducing use of new water.



### HEALTH-SAFE PAINTS AND ADHESIVES

Low Volatile Organic Compound (VOC) paints, adhesives and sealants for interior fixtures ensure your health and safety.



### WATER-EFFICIENT FIXTURES

This simple addition ensures that water consumption is optimised and water bills are reduced.



### RECYCLED CONSTRUCTION MATERIALS

Recycled and locally produced materials have been used, thereby reducing carbon dioxide emissions.



### SMART LIGHTING

CFLs and LEDs are used in external and common lighting areas to promote low electric consumption.



### WASTE SEGREGATION SYSTEM

Wet and dry waste management has been implemented to ensure that waste is managed in an eco-friendly manner.



# GODREJ PROPERTIES



Godrej Properties brings the Godrej Group philosophy of innovation and excellence to the real estate industry. Each Godrej Properties development combines a 117-year legacy of excellence and trust with a commitment to cutting-edge design and technology. Godrej Properties is currently developing residential, commercial and township projects spread across 9.5 million square meters (102 million square feet) in 12 cities. Godrej Properties has always embraced the notion that collaboration is the essence of excellence. To that end, we have worked with the best designers, architects and contractors within India and around the globe to deliver imaginative and sustainable spaces. By bringing together the best talent in the global real estate sector, Godrej Properties works to create developments that will last into the future, and foresee the needs of each and every resident. Godrej Properties has received over 100 awards, including “Most Reliable Builder for 2014” at the CNBC AWAAZ Real Estate Awards.

## RESIDENTIAL PROJECTS

Godrej Garden City	Ahmedabad
Godrej Crest	Bengaluru
Godrej Woodsman Estate	Bengaluru
Godrej Platinum	Bengaluru
Godrej Gold County	Bengaluru
Godrej Palm Grove	Chennai
Godrej Frontier	Gurgaon
Godrej Summit	Gurgaon
Godrej Oasis	Gurgaon
Godrej Prakriti	Kolkata

Godrej Platinum
Godrej Alpine
Godrej Bayview
Planet Godrej
Godrej Platinum
Godrej Riverside
Godrej Serenity
Godrej Waldorf
Godrej Edenwoods
Godrej Hill
Godrej Anandam
Godrej Horizon
Godrej Sherwood

## COMMERCIAL PROJECTS

Godrej Eternia	Chandigarh
Godrej Genesis	Kolkata
Godrej Waterside	Kolkata
Godrej Coliseum	Mumbai
Godrej BKC	Mumbai
The Trees	Mumbai
Godrej Castlemaine	Pune
Godrej Eternia	Pune
Godrej Millennium	Pune



GODREJ GLENELG  
MUMBAI



GODREJ BKC,  
MUMBAI



PLANET GODREJ,  
MUMBAI



GODREJ PLATINUM,  
BENGALURU



GODREJ GOLD COUNTY,  
BENGALURU



# GODREJ ARIA

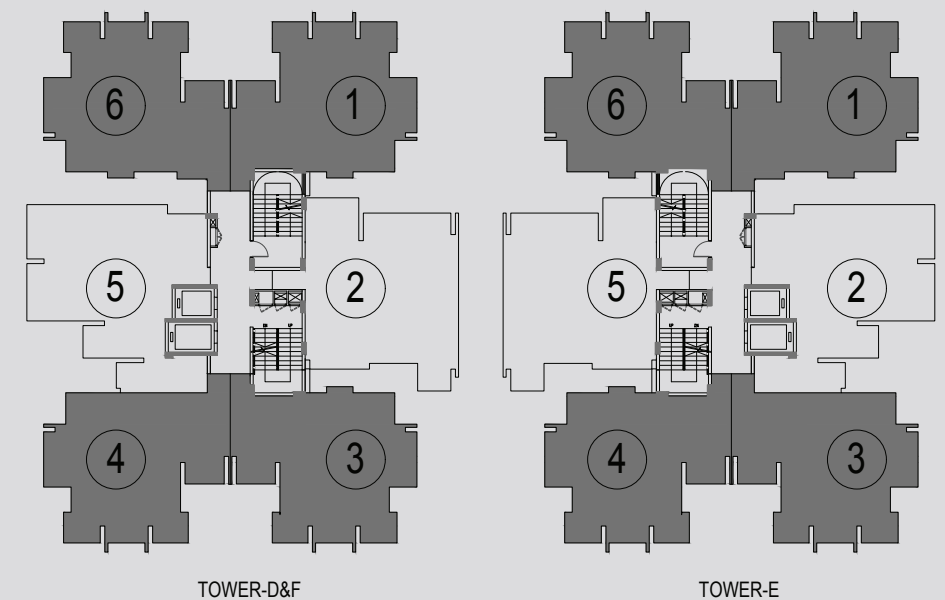
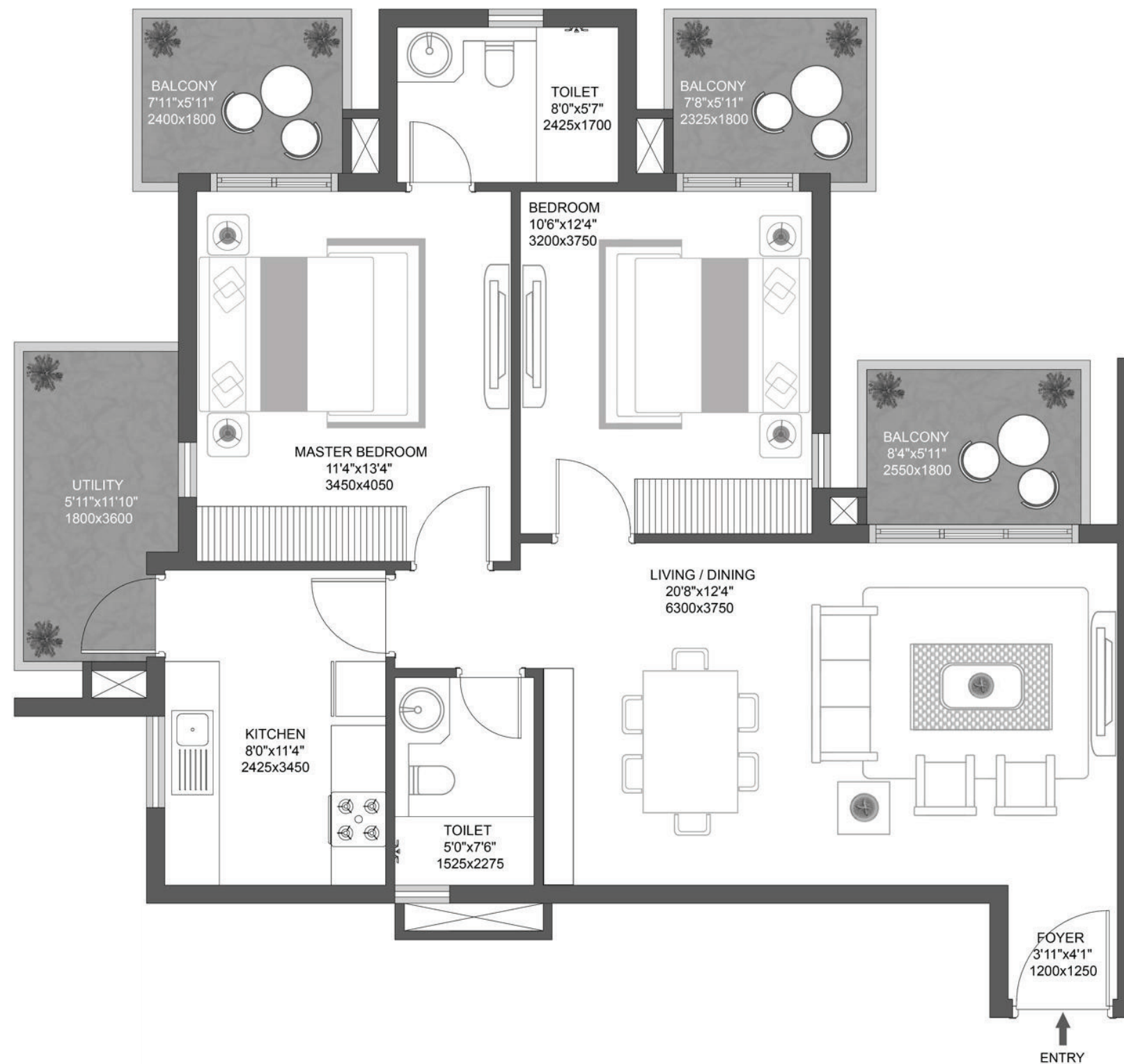
SECTOR 79, GURGAON

**2 BHK**

Unit Carpet Area: 70 Sq.Mt.

Exclusive Area: 19.04 Sq.Mt.

Total Area: 89.04 Sq.Mt.



RERA Registration No.61 of 2017 dated 17.08.2017- [www.haryanarera.gov.in](http://www.haryanarera.gov.in); License No 47 of 2013 & 109 of 2014; Building Plan Approval Memo No. ZP- 897/SD(BS)/2015/14623 dated 07/08/2015.. Fixtures, furniture shown in the layout plan are for representational purposes only and do not form part of the standard specifications/ amenities/services to be provided in the unit. In order to avoid any confusion, please note that Tower Nos. 9, 10, 11, 12, 13 and 14 shown in the approved plans corresponds to the Tower Nos. A, B, C, D, F and E of this marketing layout plan respectively. Official website of the company is [www.godrejproperties.com](http://www.godrejproperties.com). Please do not rely on any other website.

# GODREJ ARIA

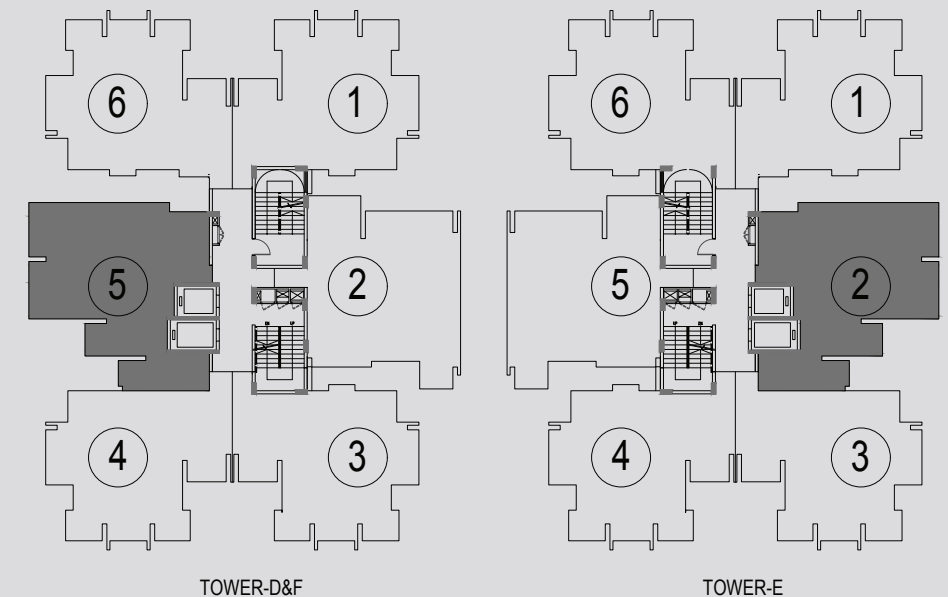
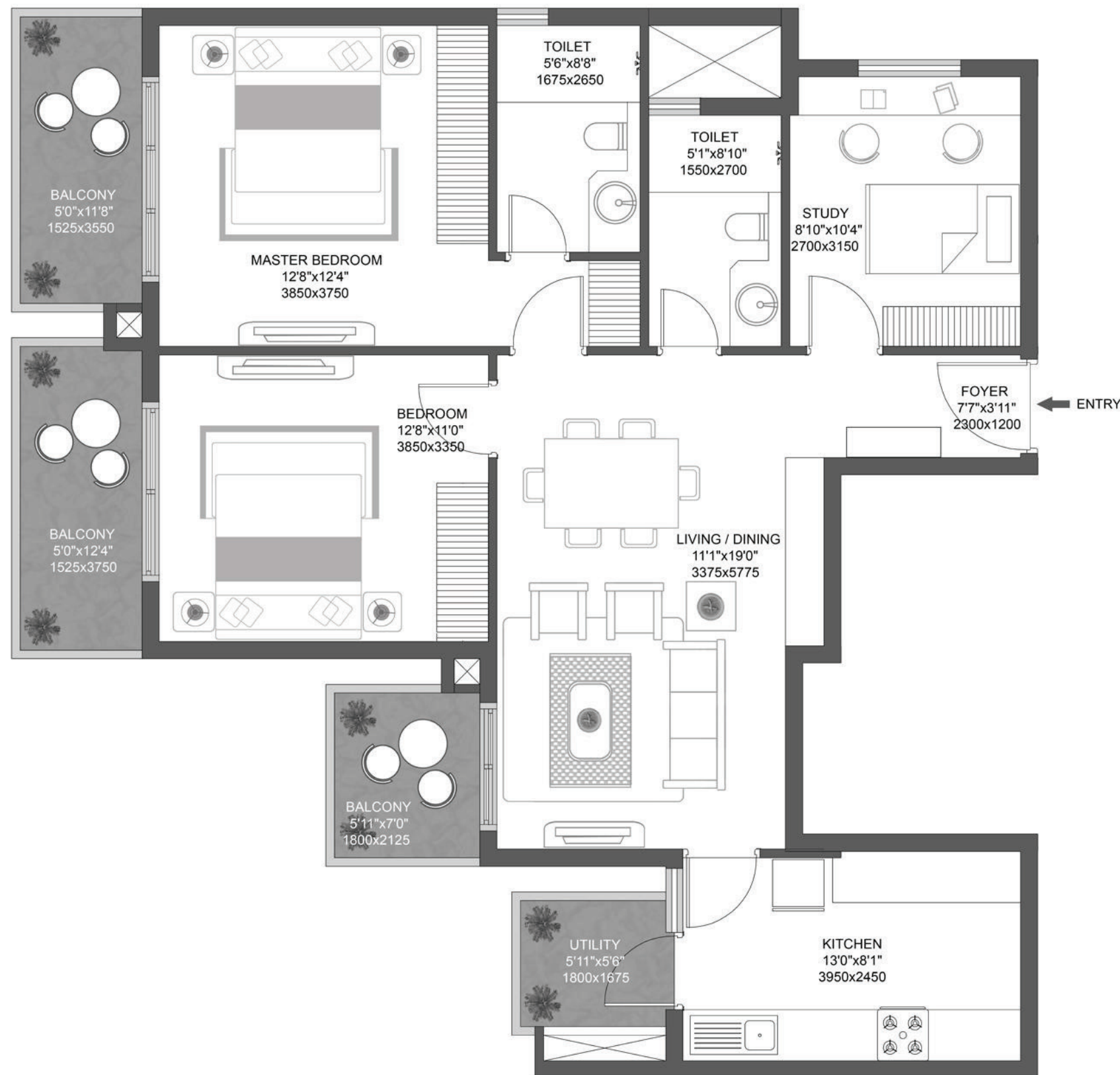
SECTOR 79, GURGAON

## 2 BHK+ Study - Type 1

Unit Carpet Area: 80.88 Sq.Mt.

Exclusive Area: 17.66 Sq.Mt.

Total Area: 98.54 Sq.Mt.



RERA Registration No.61 of 2017 dated 17.08.2017- [www.haryanarera.gov.in](http://www.haryanarera.gov.in); License No 47 of 2013 & 109 of 2014; Building Plan Approval Memo No. ZP- 897/SD(BS)/2015/14623 dated 07/08/2015.. Fixtures, furniture shown in the layout plan are for representational purposes only and do not form part of the standard specifications/ amenities/services to be provided in the unit. In order to avoid any confusion, please note that Tower Nos. 9, 10, 11, 12, 13 and 14 shown in the approved plans corresponds to the Tower Nos. A, B, C, D, F and E of this marketing layout plan respectively. Official website of the company is [www.godrejproperties.com](http://www.godrejproperties.com). Please do not rely on any other website.

# GODREJ ARIA

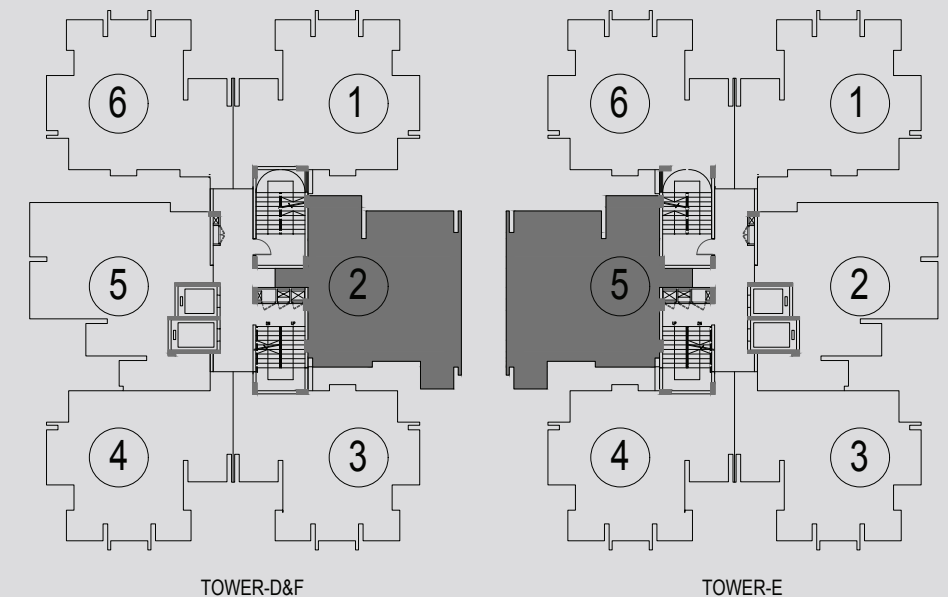
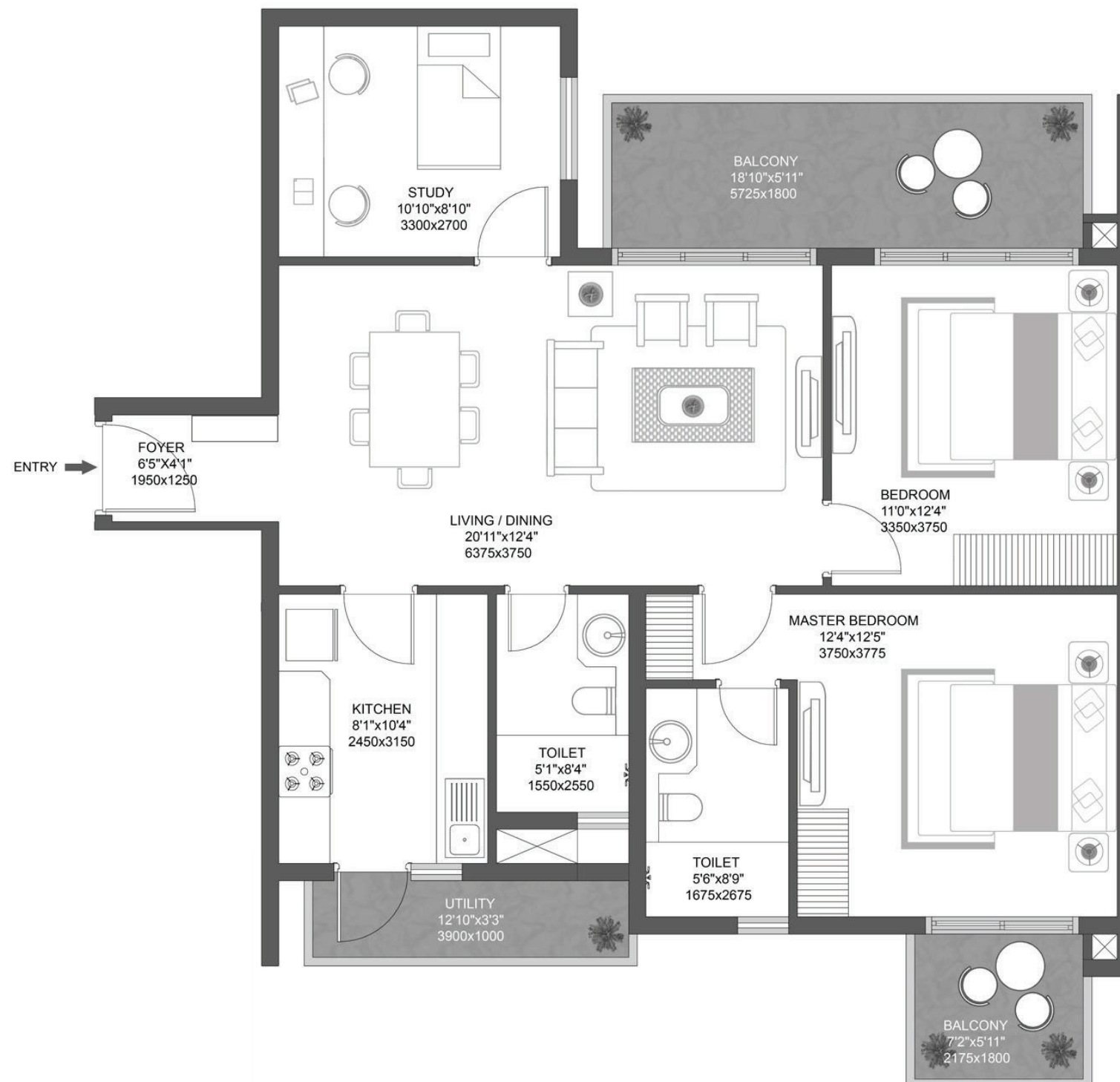
SECTOR 79, GURGAON

## 2 BHK+ Study - Type 2

Unit Carpet Area: 81.99 Sq.Mt.

Exclusive Area: 17.97 Sq.Mt.

Total Area: 99.96 Sq.Mt.



RERA Registration No.61 of 2017 dated 17.08.2017- [www.haryanarera.gov.in](http://www.haryanarera.gov.in); License No 47 of 2013 & 109 of 2014; Building Plan Approval Memo No. ZP- 897/SD(BS)/2015/14623 dated 07/08/2015.. Fixtures, furniture shown in the layout plan are for representational purposes only and do not form part of the standard specifications/ amenities/services to be provided in the unit. In order to avoid any confusion, please note that Tower Nos. 9, 10, 11, 12, 13 and 14 shown in the approved plans corresponds to the Tower Nos. A, B, C, D, F and E of this marketing layout plan respectively. Official website of the company is [www.godrejproperties.com](http://www.godrejproperties.com). Please do not rely on any other website.



# GODREJ ARIA

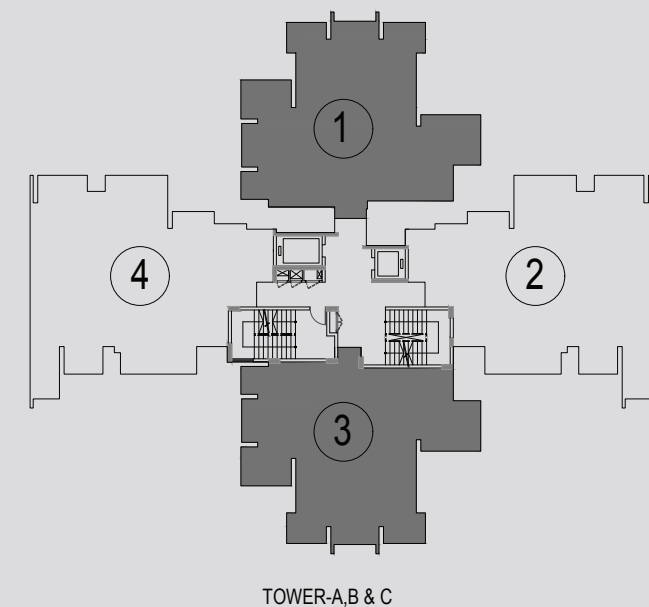
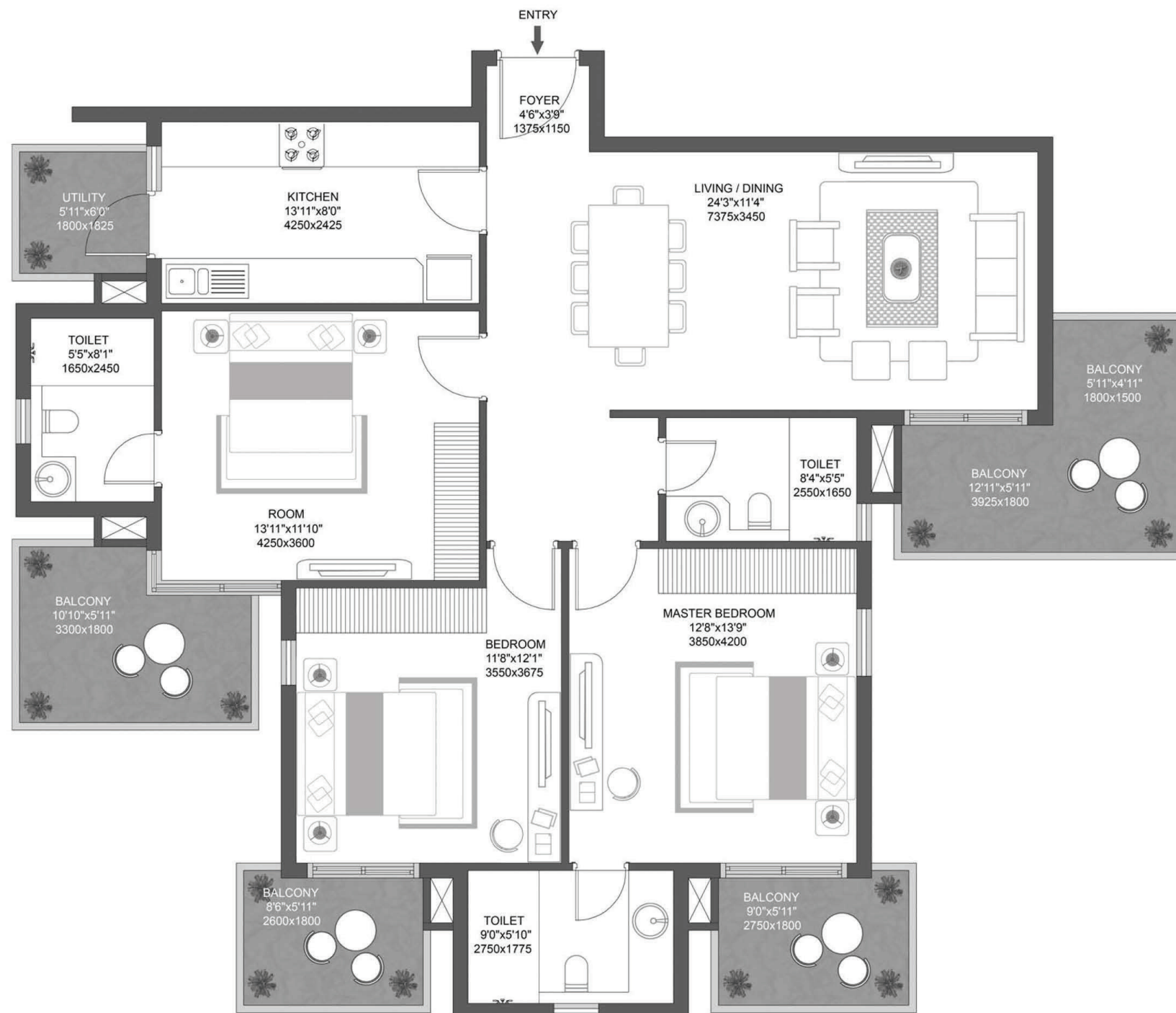
SECTOR 79, GURGAON

3 RHK

Unit Carpet Area: 100.93 Sq.Mt.

Exclusive Area: 29.83 Sq.Mt.

Total Area: 130.76 Sq.Mt.



RERA Registration No.61 of 2017 dated 17.08.2017- [www.haryanarera.gov.in](http://www.haryanarera.gov.in); License No 47 of 2013 & 109 of 2014; Building Plan Approval Memo No. ZP- 897/SD(BS)/2015/14623 dated 07/08/2015.. Fixtures, furniture shown in the layout plan are for representational purposes only and do not form part of the standard specifications/ amenities/services to be provided in the unit. In order to avoid any confusion, please note that Tower Nos. 9, 10, 11, 12, 13 and 14 shown in the approved plans corresponds to the Tower Nos. A, B, C, D, F and E of this marketing layout plan respectively. Official website of the company is [www.godrejproperties.com](http://www.godrejproperties.com). Please do not rely on any other website.

# GODREJ ARIA

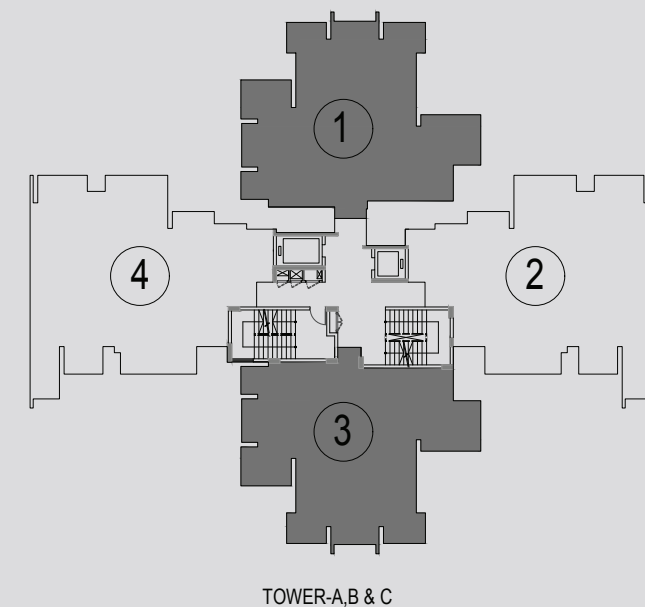
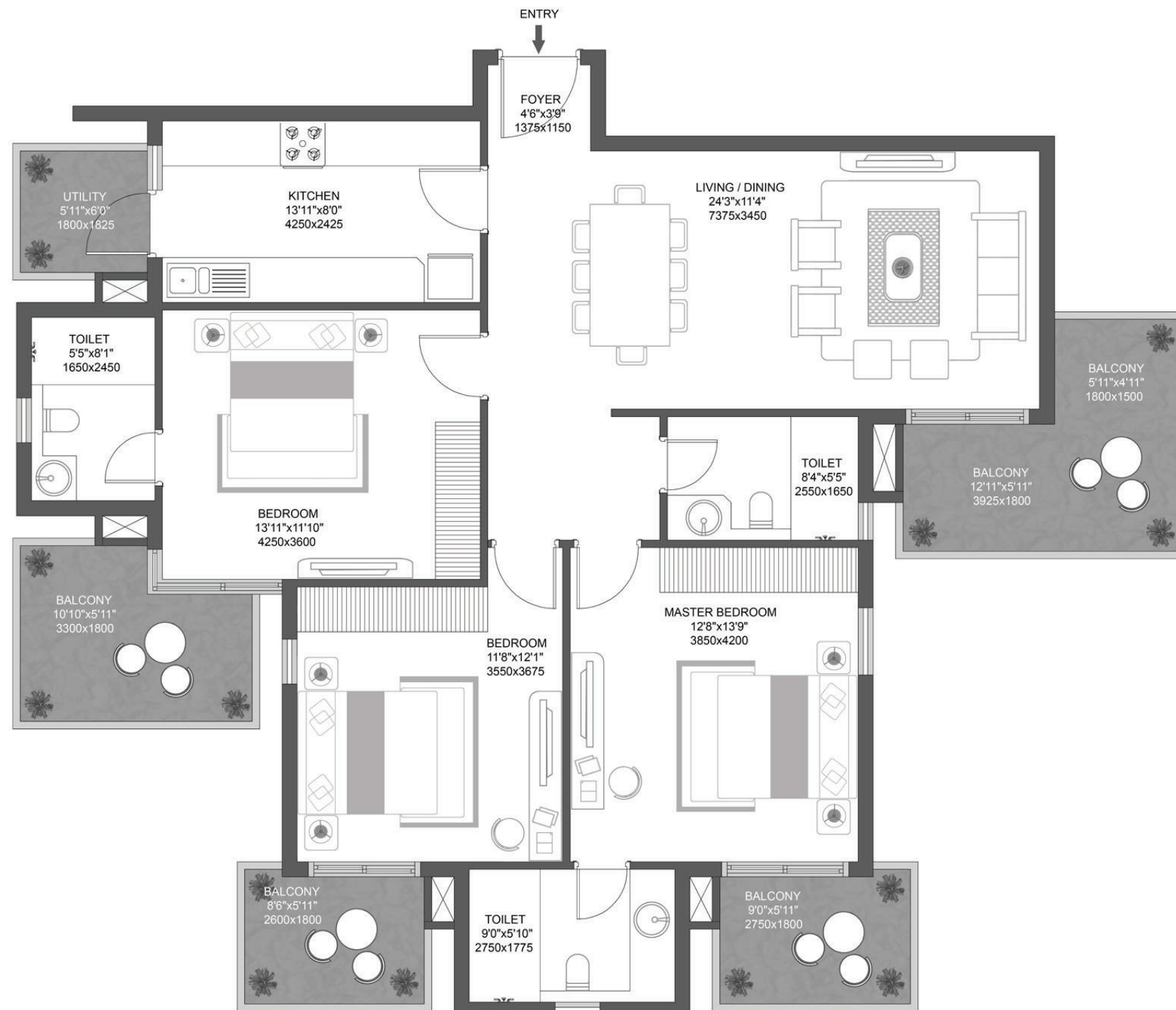
SECTOR 79, GURGAON

**3 BHK**

Unit Carpet Area: 100.93 Sq.Mt.

Exclusive Area: 29.83 Sq.Mt.

Total Area: 130.76 Sq.Mt.



RERA Registration No.61 of 2017 dated 17.08.2017- [www.haryanarera.gov.in](http://www.haryanarera.gov.in); License No 47 of 2013 & 109 of 2014; Building Plan Approval Memo No. ZP- 897/SD(BS)/2015/14623 dated 07/08/2015.. Fixtures, furniture shown in the layout plan are for representational purposes only and do not form part of the standard specifications/ amenities/services to be provided in the unit. In order to avoid any confusion, please note that Tower Nos. 9, 10, 11, 12, 13 and 14 shown in the approved plans corresponds to the Tower Nos. A, B, C, D, F and E of this marketing layout plan respectively. Official website of the company is [www.godrejproperties.com](http://www.godrejproperties.com). Please do not rely on any other website.



# GODREJ ARIA

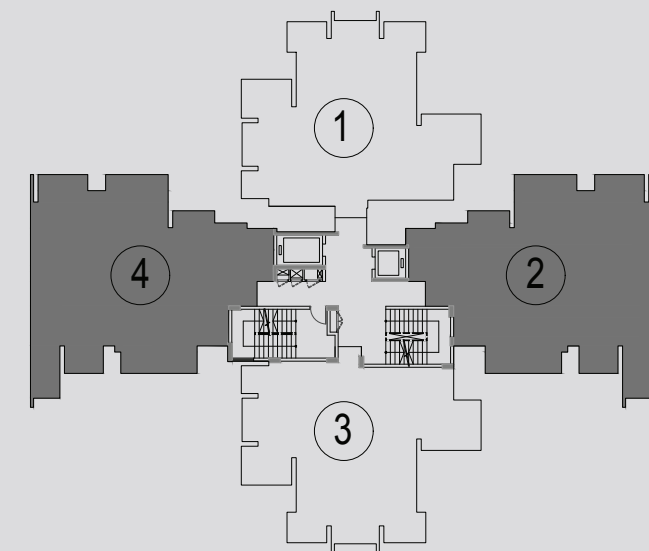
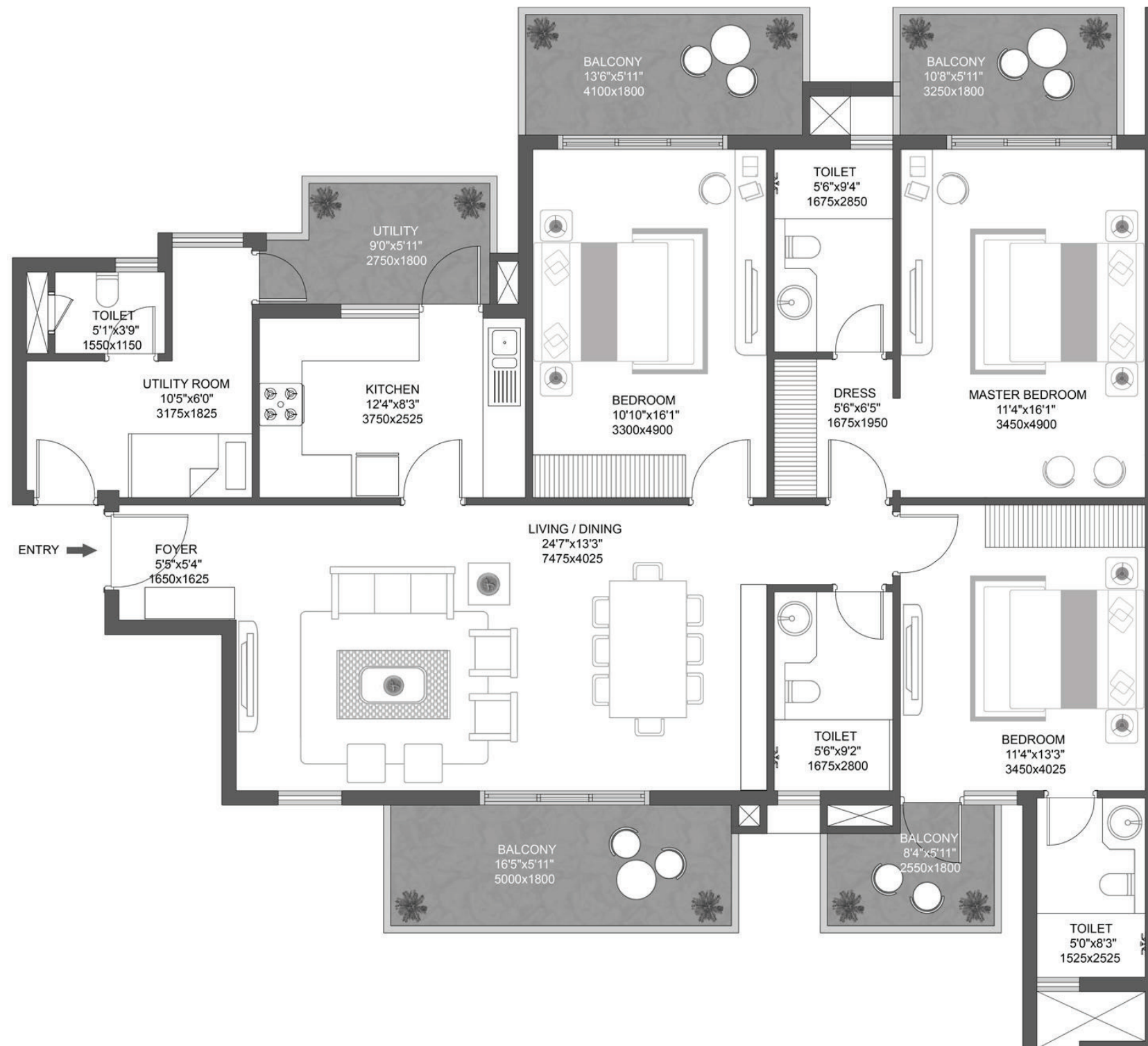
SECTOR 79, GURGAON

## 3 BHK + Utility Room

Unit Carpet Area: 119.92 Sq.Mt.

Exclusive Area: 31.07 Sq.Mt.

Total Area: 150.99 Sq.Mt.



TOWER-A,B&C

RERA Registration No.61 of 2017 dated 17.08.2017- [www.haryanarera.gov.in](http://www.haryanarera.gov.in); License No 47 of 2013 & 109 of 2014; Building Plan Approval Memo No. ZP- 897/SD(BS)/2015/14623 dated 07/08/2015.. Fixtures, furniture shown in the layout plan are for representational purposes only and do not form part of the standard specifications/ amenities/services to be provided in the unit. In order to avoid any confusion, please note that Tower Nos. 9, 10, 11, 12, 13 and 14 shown in the approved plans corresponds to the Tower Nos. A, B, C, D, F and E of this marketing layout plan respectively. Official website of the company is [www.godrejproperties.com](http://www.godrejproperties.com). Please do not rely on any other website.